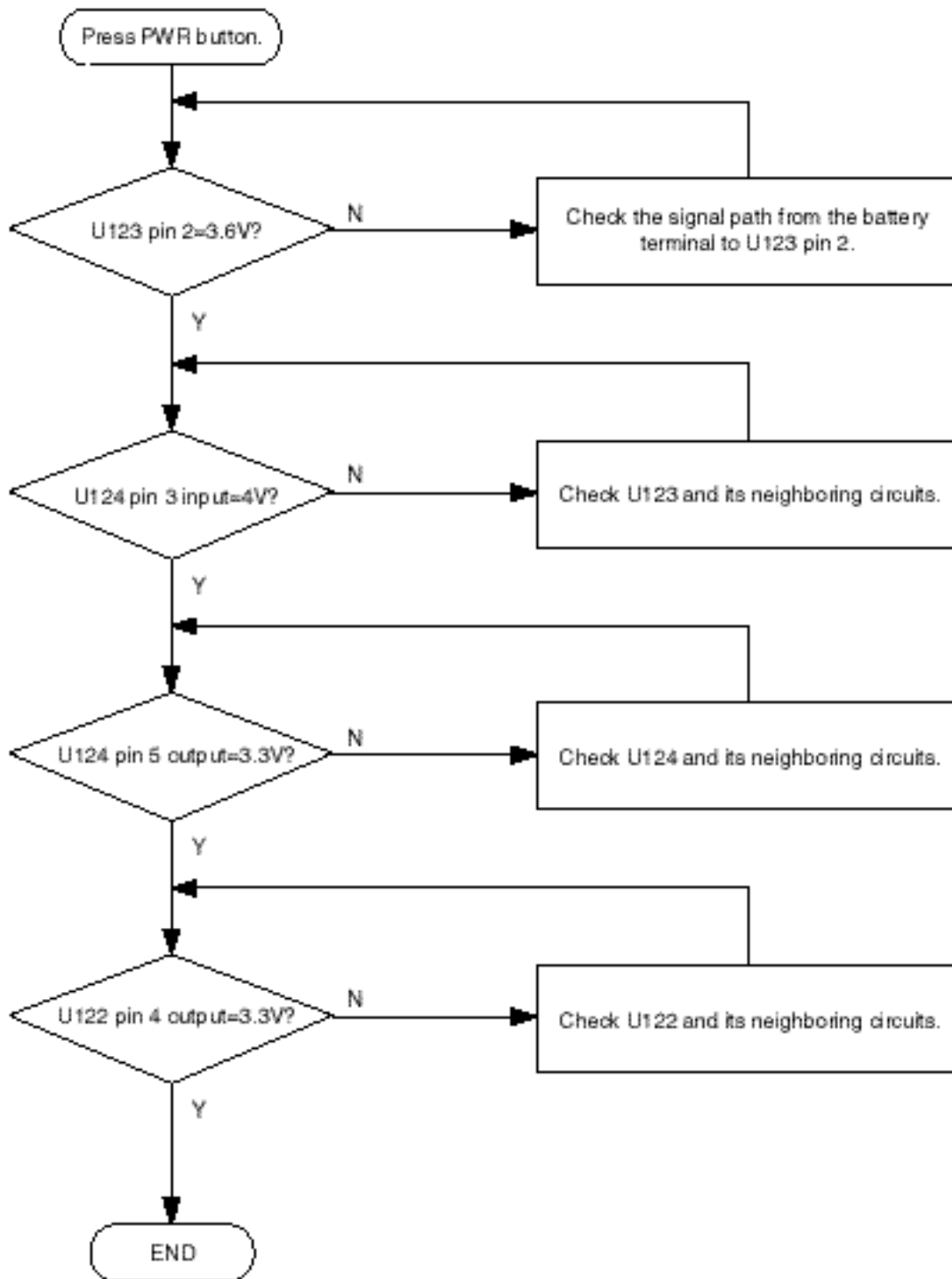


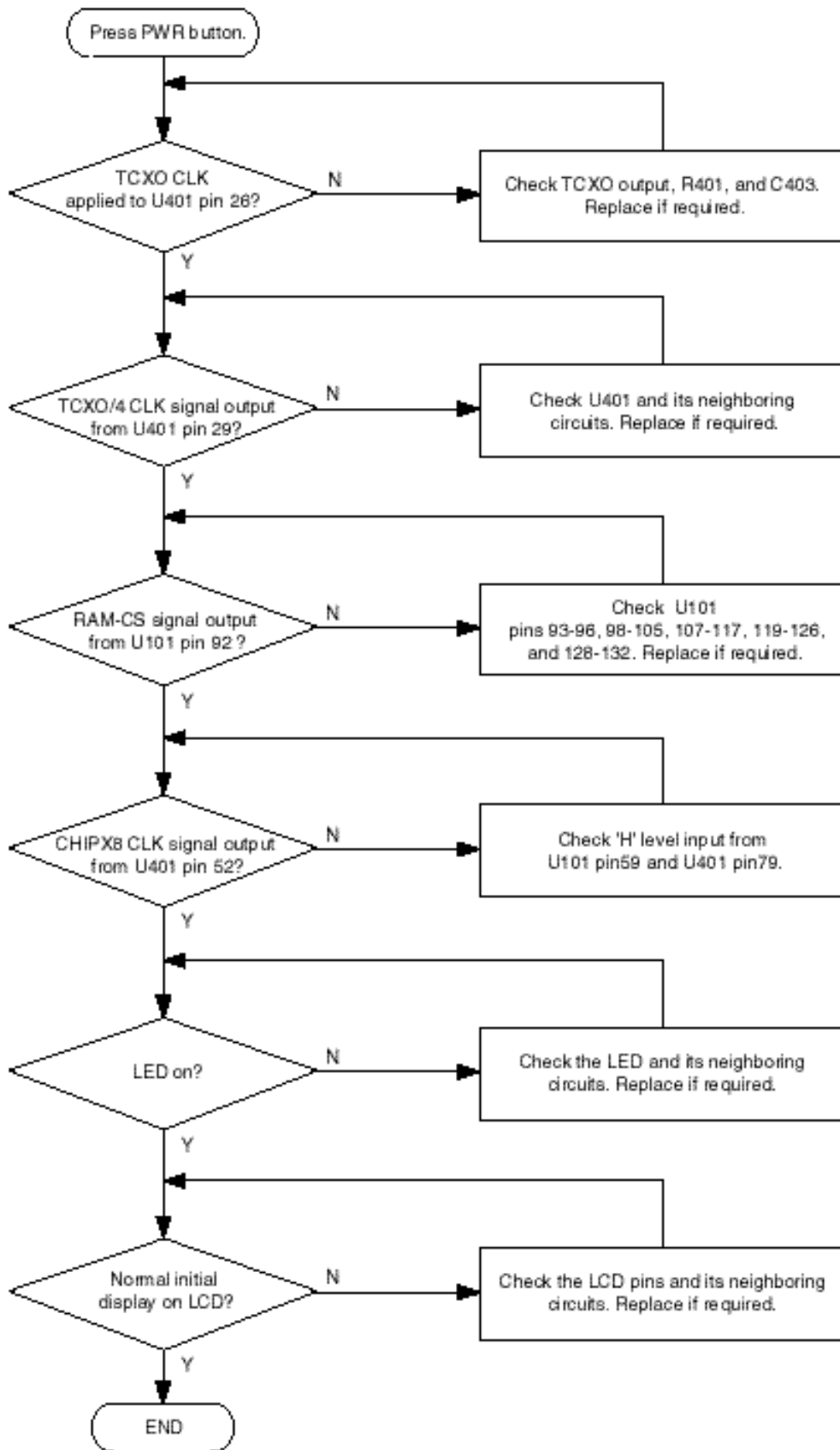
8. Troubleshooting

8-1 Logic Section

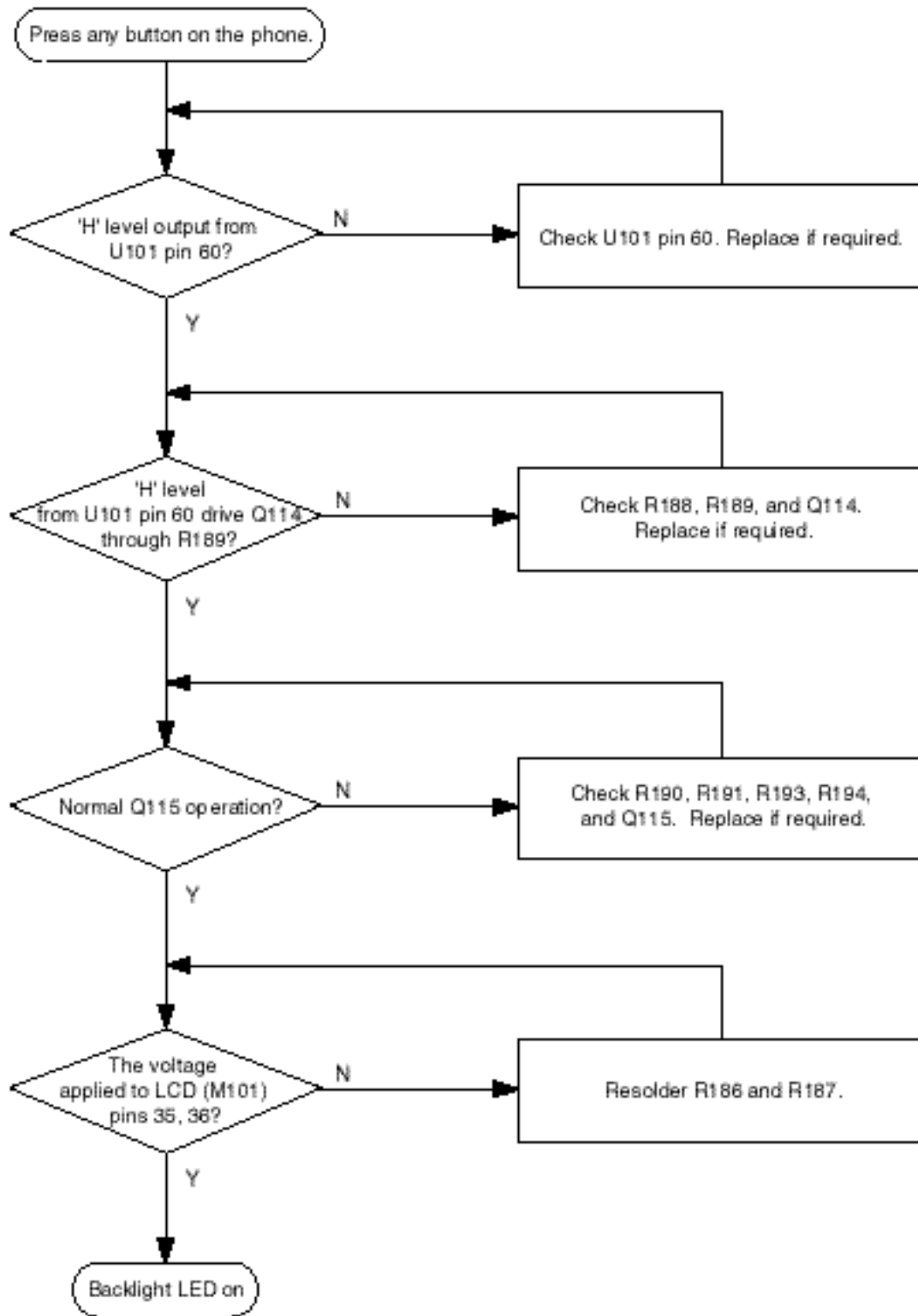
8-1-1 No Power



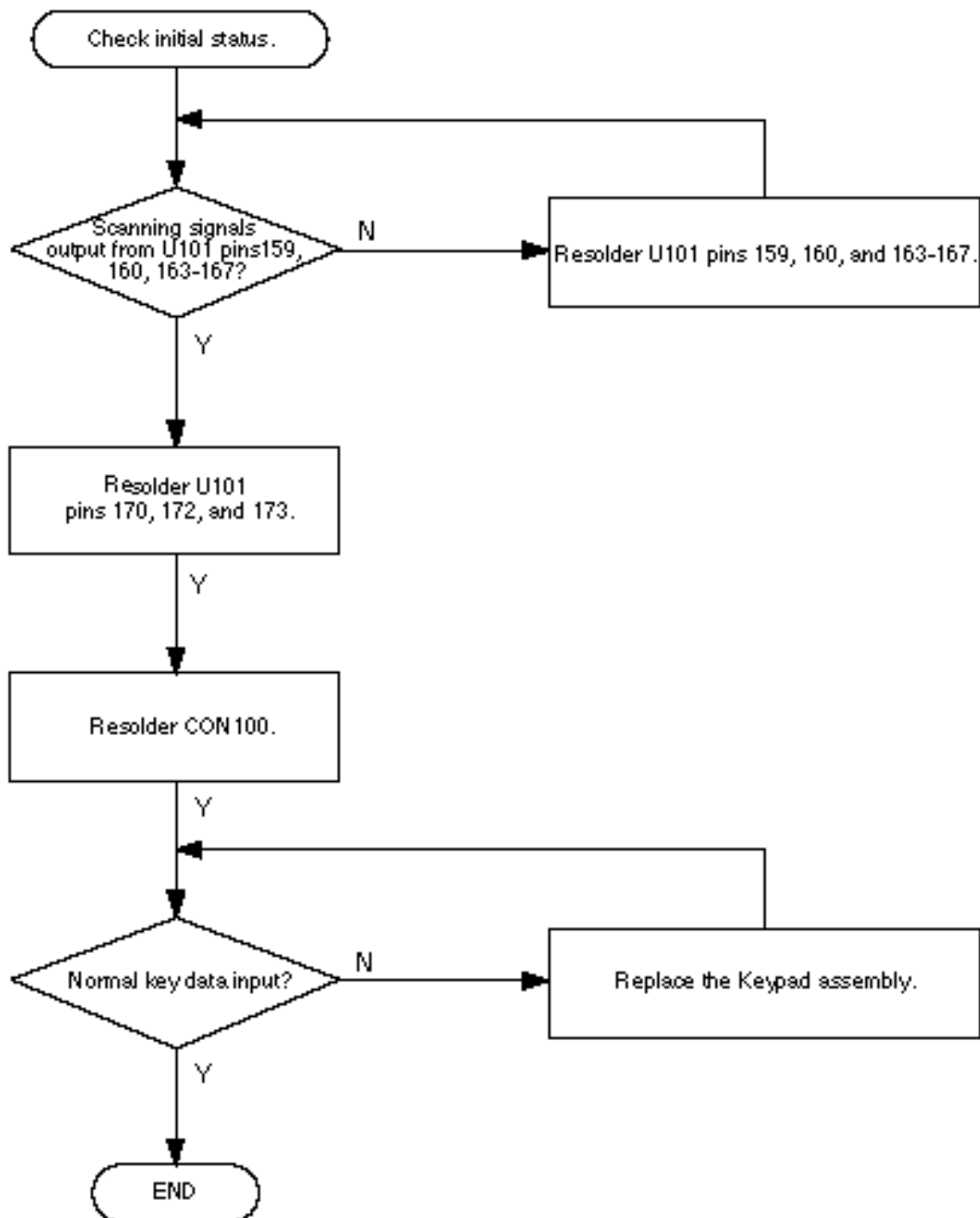
8-1-2 Abnormal Initial Operation (Normal +3.3V voltage source)



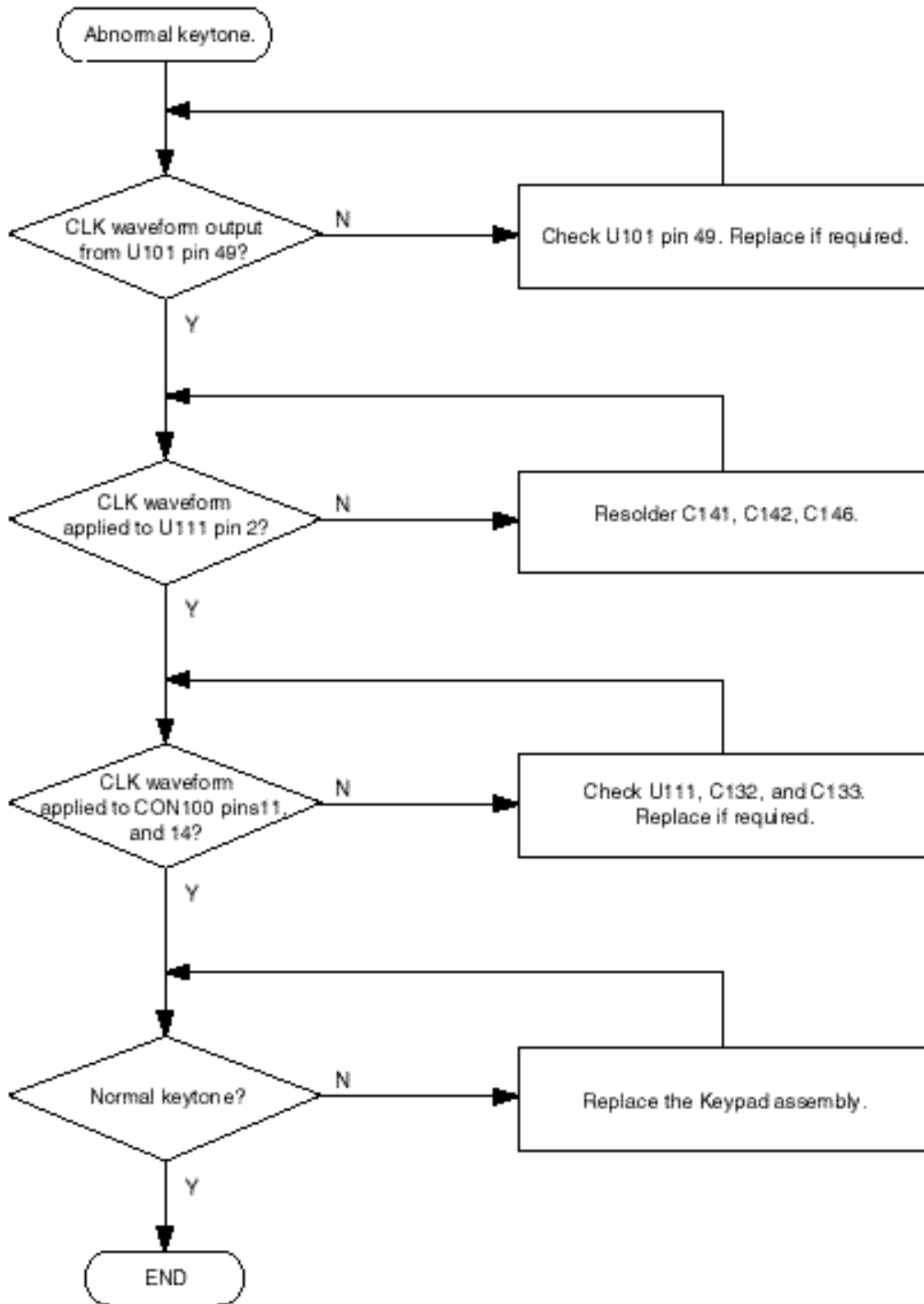
8-1-3 Abnormal Backlight Operation



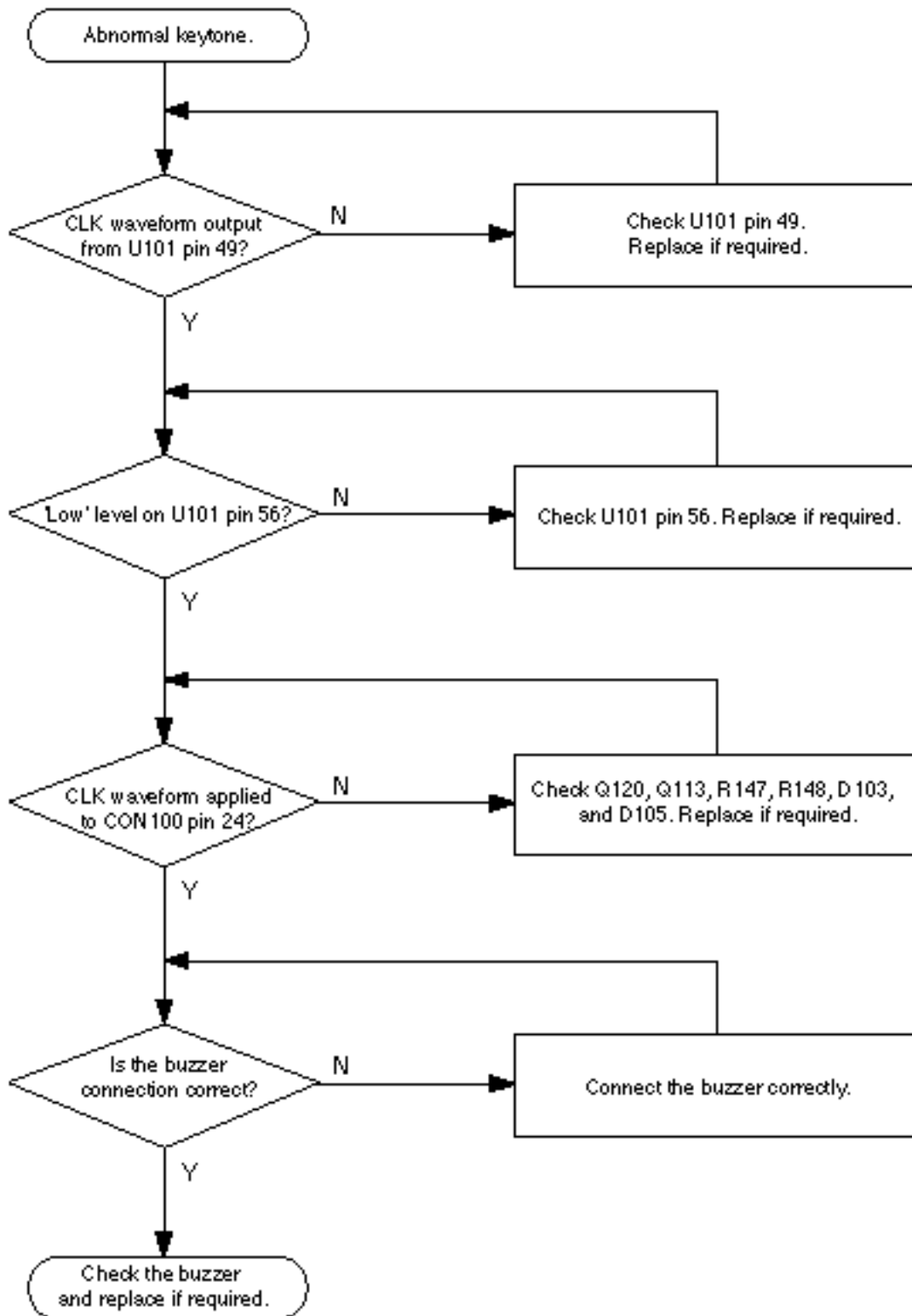
8-1-4 Abnormal Key Data Input



8-1-5 Abnormal Keytone

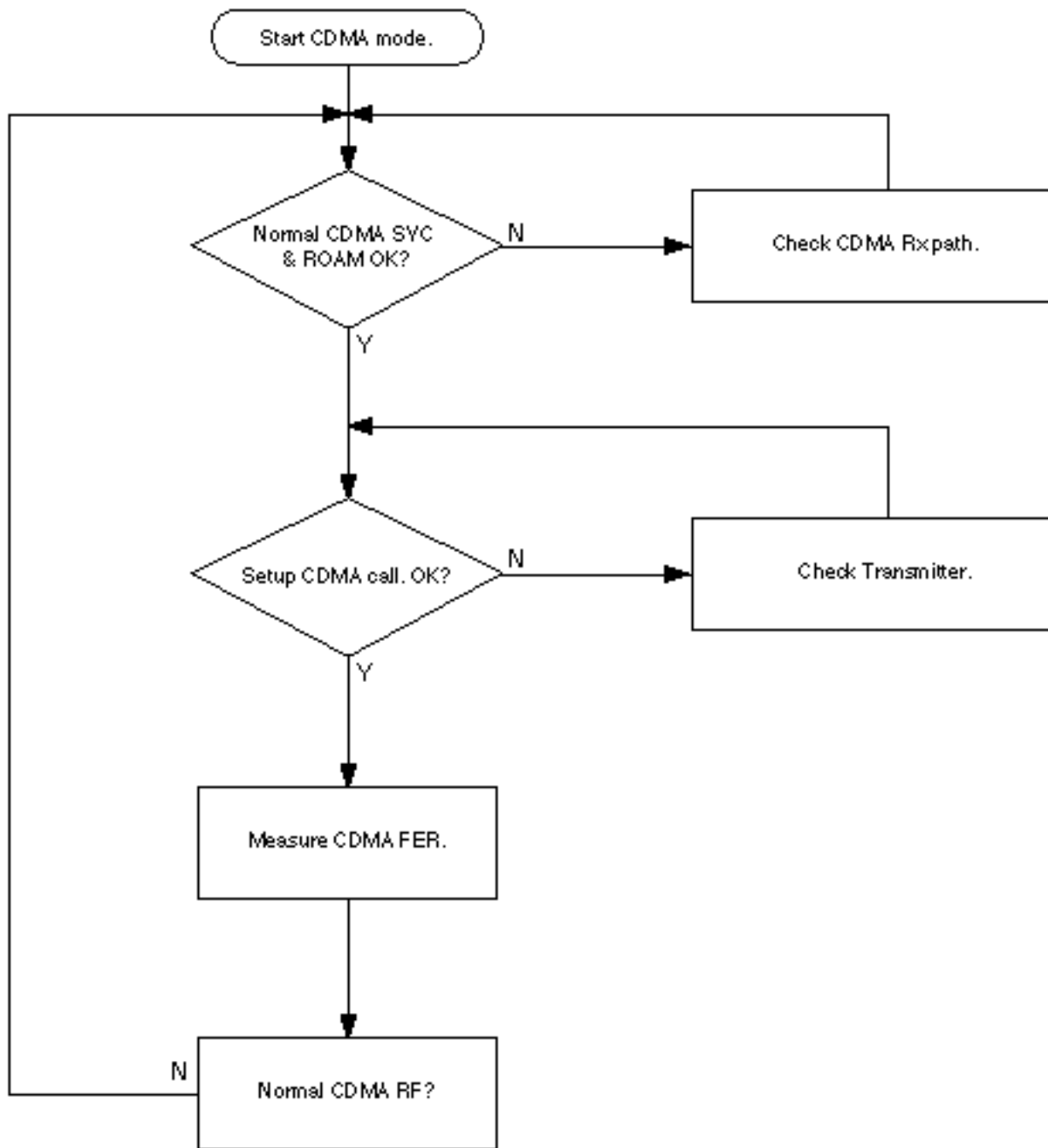


8-1-6 Abnormal Alert Tone



8-2 RF Section

8-2-1 RF Section Troubleshooting



8-2-2 Receiver Part

.

8-2-3 Transmitter Part

